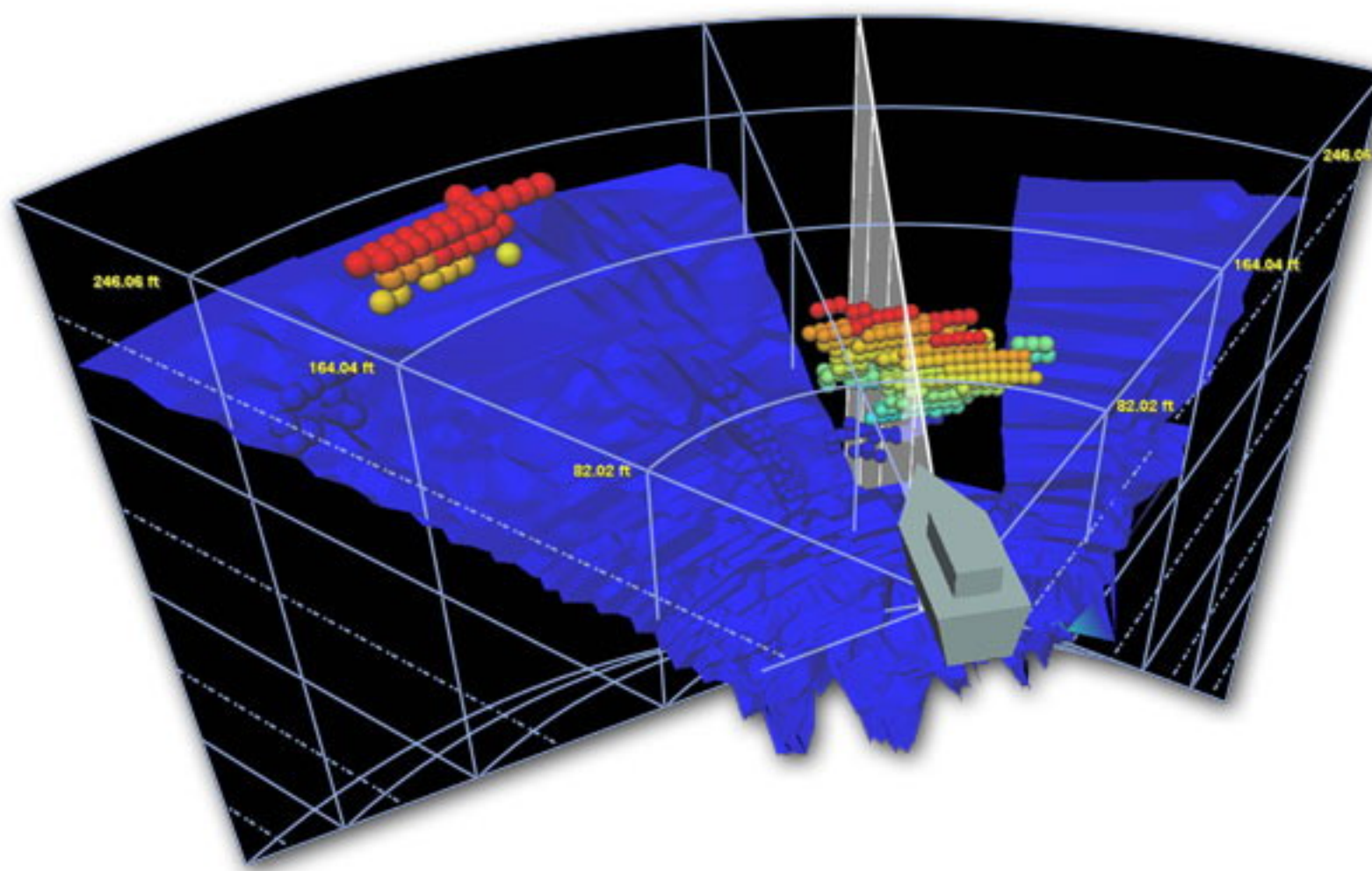


3D SONAR

FarSounder™ Forward Looking Sonar Systems



Answering The Most Basic Question:™
"How deep is the water in front of me?"

See Dangers AHEAD Of Your Vessel BEFORE You Get There!

FarSounder looks ahead and displays the seafloor and in-water obstacles in three dimensions. The entire 3-D image is created with a single ping, and is updated every 2 seconds. Know the range, bearing, AND depth of all the obstacles ahead and to the side of your vessel.

Navigate Narrow and Shallow Channels With CONFIDENCE!

Concerned about the water depth in a shallow channel? With real time depth information ahead of your vessel, FarSounder shows you where the deep water is and where the hazards are.

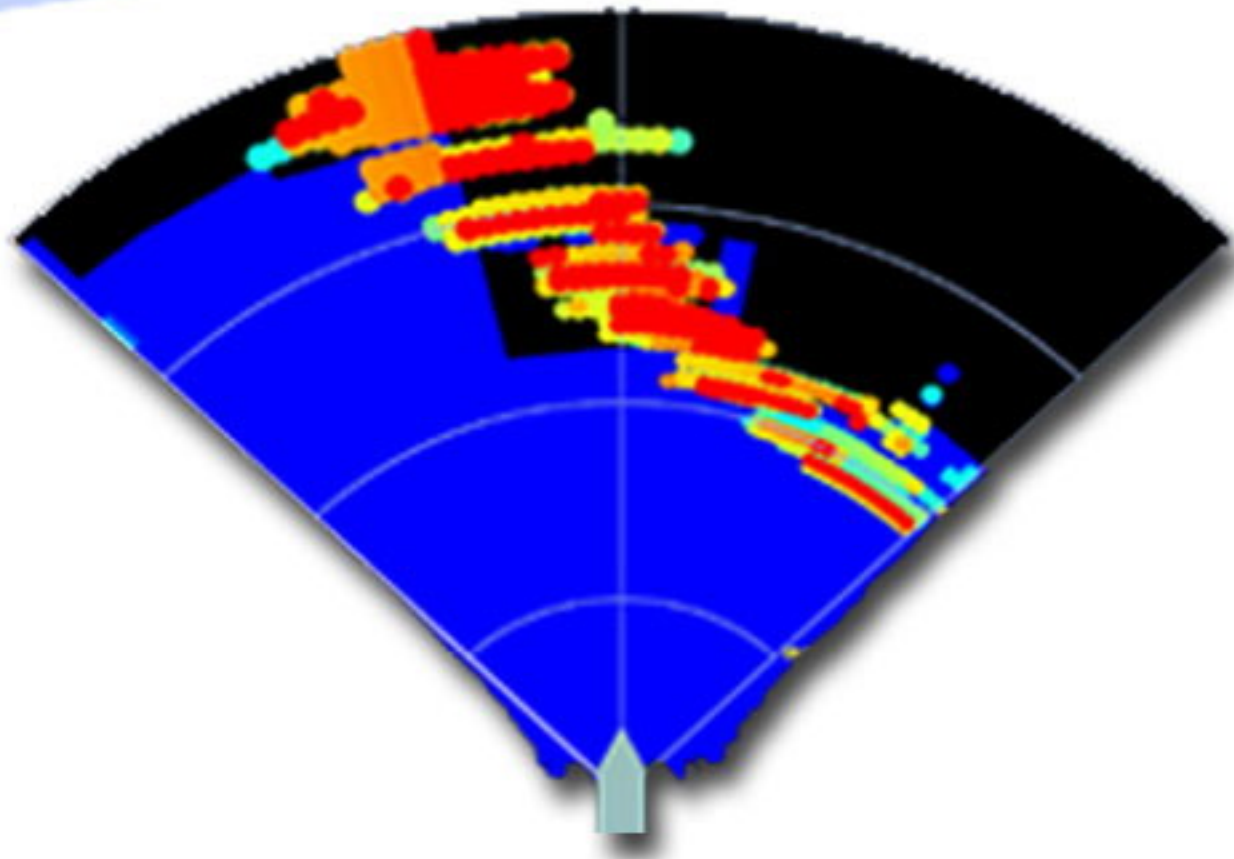
Avoid Uncharted In-Water Hazards!

Many charts are based on data that is incomplete and often out of date. Stay clear of both known and uncharted hazards such as shoals, sandbars, rocks, wrecks, buoys, submerged shipping containers, and whales.

See The Water In a Whole New Way!

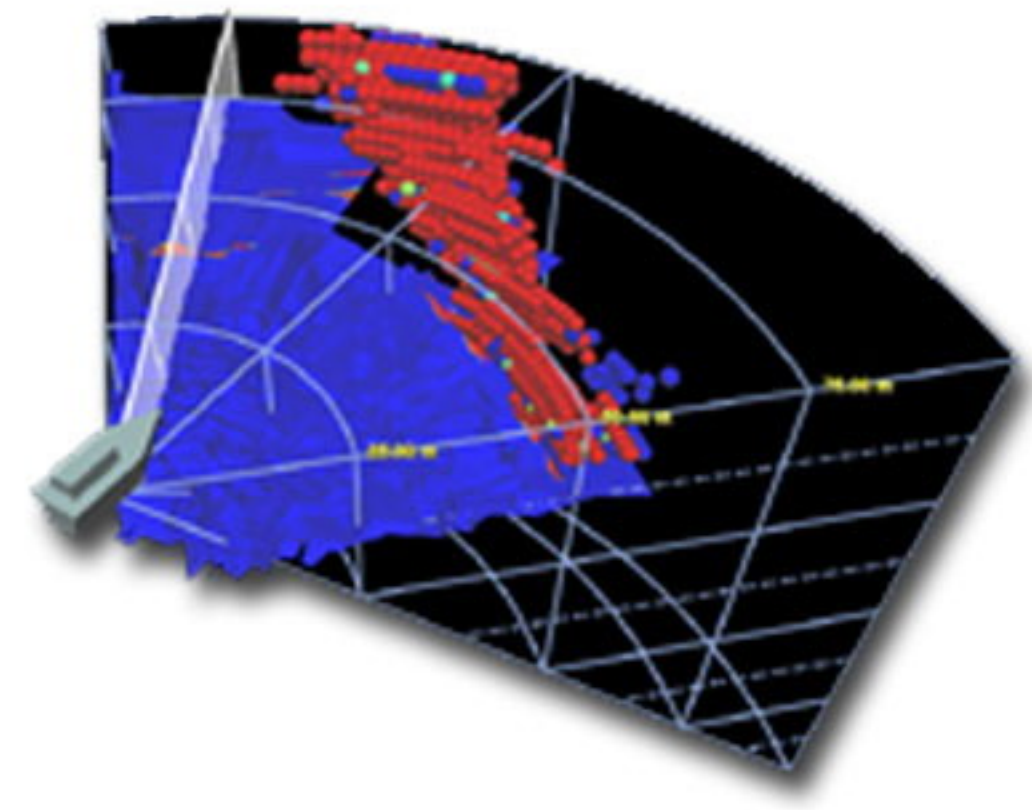
FarSounder displays the 3-D data on your computer screen in a variety of ways to suit your needs. Whether it's a rotatable 3-D image, a top-down radar-like display, or a display of the depth contours along a bearing in front of your vessel, FarSounder makes navigation so simple you will wonder how you ever managed without it.





A Pier Wall And Sea Floor Displayed in Standard Mode

This image of a pier wall against the contrast of the sea floor (blue) in the Narragansett bay shows the advantage of a 3D forward looking system. This entire image was produced with 1 ping and shows color mapped to depth.



A Pier Wall And Sea Floor Displayed in 3D Mode

This same pier wall is displayed in 3D and the wall (red) can clearly be seen coming up from the seafloor (blue). In this display color is mapped to signal strength. Color can also be mapped to depth.



A Pier Wall And Sea Floor Displayed As A Depth Profile

Much like a depth sounder can display a bottom contour of the waters you've already traveled, FarSounder can show you the depth ahead of your vessel along the bearing of your choice before you get there!

A Whole New Vision Underwater™

Navigation

FarSounder provides you with the most important information, the depth of the water *IN FRONT* of your vessel. The FarSounder system can help you navigate shallow waters, unfamiliar ports, and hazardous open waters safely and without worry.

Port Security

A FarSounder system can also be mounted on a pier or other stationary platform, and used to monitor traffic within a busy port. FarSounder's ability to monitor large areas for underwater objects in all weather and sea conditions and at night provides port operators with a degree of security that is unparalleled.

Military

FarSounder technology can be used for military purposes, and is ideal for navigation in foreign ports, mapping landing zones, swimmer detection, asset protection, and in-water mine detection. FarSounder technology can also be adapted for use on AUVs, ROVs, or UUVs.

Dredging

With FarSounder's superior underwater coverage, it is an ideal tool for monitoring the depths of critical shipping channels. Port operators can quickly confirm that channels are adequately dredged.



Pictured above is a FarSounder FS-3 system featuring a power module, custom cable, sonar-head, and SonaSoft™ user-interface software. The FarSounder may be installed on both existing and new vessels. User interface software can be run on a laptop or integrated bridge computer.

Custom FarSounder Solutions

- Marine mammal tracking, monitoring, and avoidance
- Shallow water surveys (up to 150 feet depth)
- Underwater tank, caisson, piling, pier, sewer, and pipeline inspection and monitoring

Authorized FarSounder Dealer