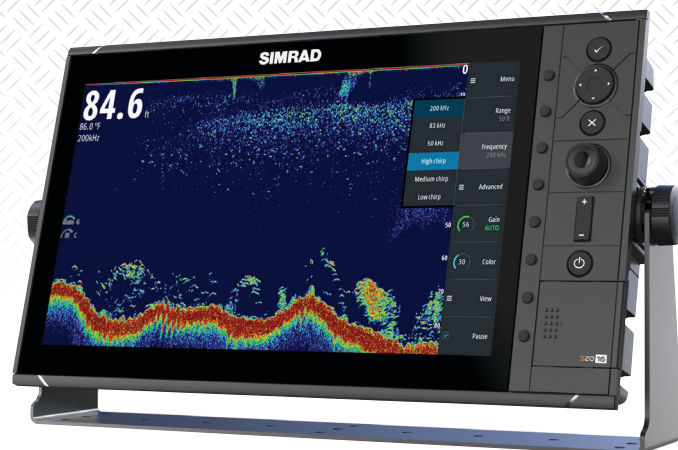


The Simrad logo is displayed in white capital letters on a red rectangular background.

S2016 Fish Finder

The S2016 Fish Finder combines Simrad Broadband Sounder™ and CHIRP technology with a 16-inch widescreen display for an extensive on-screen history, intuitive keypad-driven operation, robust construction and flexible mounting options.



Integrated Single-Channel Broadband Sounder™ Module

The S2016 includes an integrated single-channel Broadband Sounder™ module with plug-and-play transducer port, compatible with Simrad and Airmar transducers equipped with blue 7-pin connectors. Adapters are available to allow easy and cost-effective retrofit of existing Simrad, Airmar, and other third-party transducers.

CHIRP Technology

The S2016 includes CHIRP technology, which utilizes frequency-swept sonar pulses to deliver higher resolution, improved target separation, and greater image clarity than traditional sonar at all depth ranges. Simrad technology makes CHIRP available not only on special-purpose CHIRP transducers, but also via traditional single-frequency transducers. Vessels with a suitable transducer already installed can add CHIRP technology simply by installing an S2000-series Fish Finder, offering an extremely cost-effective upgrade.

Vertical Heave Compensation

Heave compensation eliminates the vertical effects of wave action from sonar depth measurements, enhancing the accuracy and consistency of bottom tracking in rough conditions. This feature requires a compatible NMEA 2000®-connected satellite compass such as the Simrad HS60 or HS70 to provide real-time heave data.

Technical specifications overleaf.

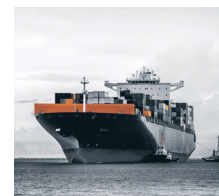
16-inch Widescreen Display

With a high-definition 16-inch LCD in widescreen format, the S2016 offers a combination of excellent vertical detail and a lengthy on-screen echosounder history. This reduces the operator's need to zoom or scroll, while allowing easy backtracking to promising areas.

White Line, White Marker and Colour Erase

The S2016 Fish Finder offers a range of features to quickly and easily adjust the on-screen image to suit the task at hand.

- White Line clearly separates the water column from the bottom with a high-contrast white line, for enhanced bottom visibility.
- White Marker allows any user-selected colour from the fish finder image to be replaced with high-contrast white, highlighting specific sonar echoes corresponding to fish or other targets of interest.
- Colour Erase allows any selected colour to be blended into the background, eliminating unwanted noise or unimportant features from the display.



Keypad Operation with Direct-Access Menu Keys

The S2016 is operated by an integrated keypad and rotary dial. Direct-access menu keys beside the display provide intuitive control of on-screen menu options, for one-button access to key settings and features. With reliable, long-life operation and clear tactile feedback, the S2016's large buttons are suitable for use in rough seas, while travelling at speed, and with wet or gloved hands.

Rugged Design with Flexible Mounting Options

The S2016 may be flush-mounted, ideal for installation aboard new vessels. Alternatively, the included gimbal bracket is well suited to outside installations or pilothouse refits. With watertight rear connectors, the S2016 is IPX7 water-resistant from all sides, in either flush- or bracket-mount installation.

Networking & Expansion

The S2016 includes Ethernet connectivity to share sonar data with other Simrad systems including NSO evo2 and NSS evo2 multifunction displays. The S2016 may also be used as a dedicated fish finder display for NSS evo2 systems, receiving sonar data from an NSS evo2 display's built-in Broadband Sounder™ module.

Other devices may be networked via the S2016's NMEA 2000® and dual NMEA 0183® ports, enabling additional functionality such as waypoint marking and sharing with compatible devices.

HDMI Output for Display Mirroring

An HDMI output gives the option of a secondary monitor mirroring the S2016's primary display, allowing fish finder data to be made visible at two separate stations or duplicated on a larger bulkhead-mounted screen. The S2016 is compatible with Simrad MO-series marine monitors, and other standard HDMI-capable displays.

Sonar Log Recording – ciBioBase and Insight Genesis Compatible

The S2016 is capable of recording sonar history to a full-sized SD memory card, which may be easily inserted and removed via a waterproof access hatch on the front panel. Recorded sonar logs may be used with the cloud-based Insight Genesis™ service to create custom fishing charts, or BioBase GIS software to create detailed aquatic bathymetric and vegetation maps for survey and research purposes.

Main Features:

- Dedicated fish finder with integrated single-channel Broadband Sounder™ module and CHIRP technology
- High depth penetration and ping speed
- Vertical heave compensation
- 16-inch 1366x768-pixel high-definition widescreen LCD
- HDMI output for mirrored secondary display
- See clearly with White Line, White Marker, and Colour Erase features

- Simple operation with 8 direct-access menu keys
- Bracket and flush mounting options (bracket included)
- Full-sized SD card slot for logs and software updates
- Ethernet, NMEA0183 & NMEA2000 connectivity

Technical Specifications

OVERVIEW	
Display Size	16-inch widescreen
Screen Brightness	400 cd/m²
Networking Capability	2x NMEA0183, 1x NMEA2000, 1x Ethernet
Video Integration	1x HDMI output
Echosounder Max Depths	3,000 m / 10,000 ft (transducer-dependent)
Echosounder Transducers	Standard Broadband and single-channel CHIRP Transducers
Echosounder Frequencies	CHIRP 28-38 kHz, 40-60 kHz, 85-145 kHz, 130-210kHz, Broadband 28kHz, 38kHz, 50kHz, 83kHz, 200kHz
DISPLAY	
Display Resolution [pixels & pixels]	1366 x 768
Display Type	16-inch LED-backlit Colour TFT LCD
TECHNICAL/ENVIRONMENTAL	
Waterproof Standard/Rating	IPX7
Product Width	455.5 mm/17.93 in
Product Depth	82.3 mm/3.24 in
Product Height	260.1 mm/10.24 in
Product Weight	4 kg / 8.8 lb
POWER	
Power Supply (Supply Voltage)	10.8-31.2 V DC
OTHER	
Languages Built-in: US English, UK English, French, Spanish, Portuguese, Portuguese (Brazil), Italian, Dutch, German, Swedish, Finnish, Norwegian/Danish, Icelandic, Russian, Ukrainian, Slovakian, Croatian, Hungarian, Bulgarian, Greek, Polish, Estonian, Czech, Afrikaans, Farsi, Arabic, Urdu (Pakistan), Indian Dialects (Hindi), Sri Lankan, Turkish, Malay, Simplified Chinese, Traditional Chinese, Japanese, Korean, Thai, Vietnamese, Gujarati, Tamil, Indonesian Supported via Language Packs: Farsi, Arabic, Urdu (Pakistan), Indian Dialects (Hindi), Sri Lankan, Turkish, Malay, Simplified Chinese, Traditional Chinese, Japanese, Korean, Thai, Vietnamese, Gujarati, Tamil	
Output Power [kW]	1kW RMS

Please Note: Specifications are subject to change.

DISTRIBUTED BY: